

BEAUTIFUL GARDEN-STYLE BUILDING FOR LEASE

PROMOTIONAL RATE OF
\$2.00 PER SQ. FT., MG



1010 EAST UNION STREET, PASADENA, CALIFORNIA

FOR LEASE

AVAILABLE SPACE: Recently renovated suite ready for occupancy. Suite 200 - Approx. 1,792 rentable sq. ft. (Reception area, open space, four (4) windowed offices facing north, and kitchen.)

Tenant pays its prorata share of utilities. Landlord pays for five (5) day interior janitorial.

AVAILABLE: Immediately.

PARKING: Four (4) reserved parking spaces in subterranean garage at \$75.00 per space per month.

FEATURES:

- * Spectrum serviced building.
- * Responsive Management on-site.
- * Security Cameras in common areas.
- * Elevator Served.
- * Short walk to Lake Avenue and Colorado Boulevard retail and restaurants.



For more Information, Contact:

Dan Alle

dalle@redstonecre.com

Lic. # No. 01017941

(626) 483-6358

Julie Alle

jalle@redstonecre.com

Lic. # No. 01889085

(626) 864-3927

Redstone
COMMERCIAL REAL ESTATE

1010 E. UNION STREET

SUITE 200 - INTERIOR PICTURES



OPEN AREA FACING NORTH



OPEN / KITCHEN AREA



DIFFERENT ANGLE OF OPEN AREA



PRIVATE OFFICE #1

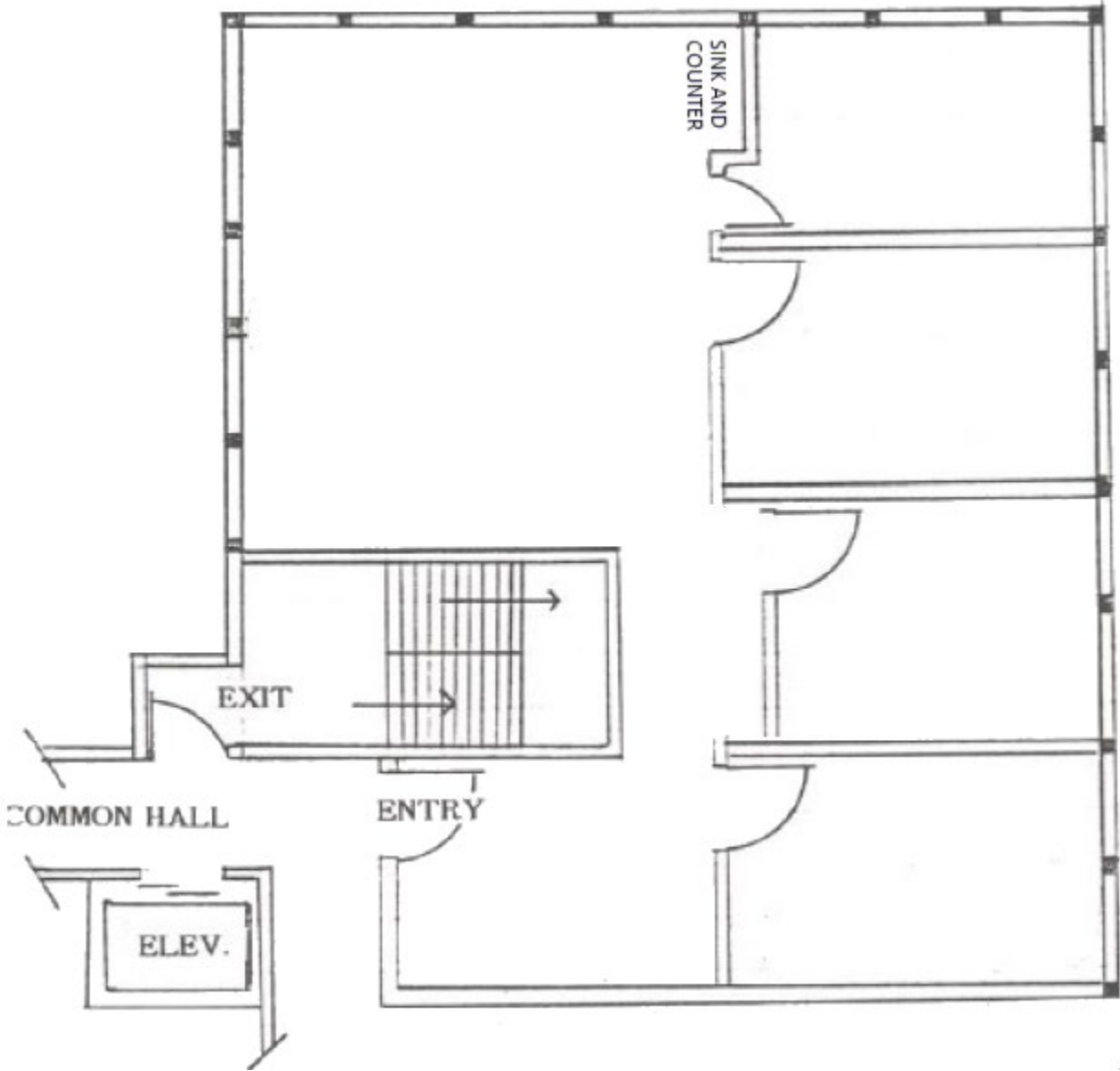


PRIVATE OFFICE #2



PRIVATE OFFICE #3

SUITE 200
FLOOR PLAN



AMENITIES

