

595 EAST COLORADO BOULEVARD



HISTORIC LANDMARK BUILDING ON ROSE PARADE ROUTE DOWNTOWN PASADENA AT COLORADO AND MADISON

AVAILABLE SPACE:

Suite 211 - 737 RSF

Suite 409 - 592 RSF (Avail. 06/01/26)

Suite 412 - 411 RSF

Suite 501 - 1,318 RSF (Avail. 07/01/26)

RENTAL RATE: \$3.70 - \$3.80 per sq. ft., FSG.

AMENITIES:

- Ample covered parking available (3/1,000) at \$85.00 per unreserved parking space.
- LEED Gold certified.
- Flexible suite layouts and high-quality tenant improvements.
- Tender Greens, Urth Café and Star Leaf.
- Breathtaking views of City Hall and Rose Parade.
- Professional, stable ownership and on-site management team.
- Walking distance to Old Town Pasadena, Plaza Paseo retail/restaurants.
- Across the street from Marriott "AC Hotel Pasadena".

FOR LEASE



For more information, Contact:

Dan Alle

dalle@redstonecre.com

Lic. # No. 01017941

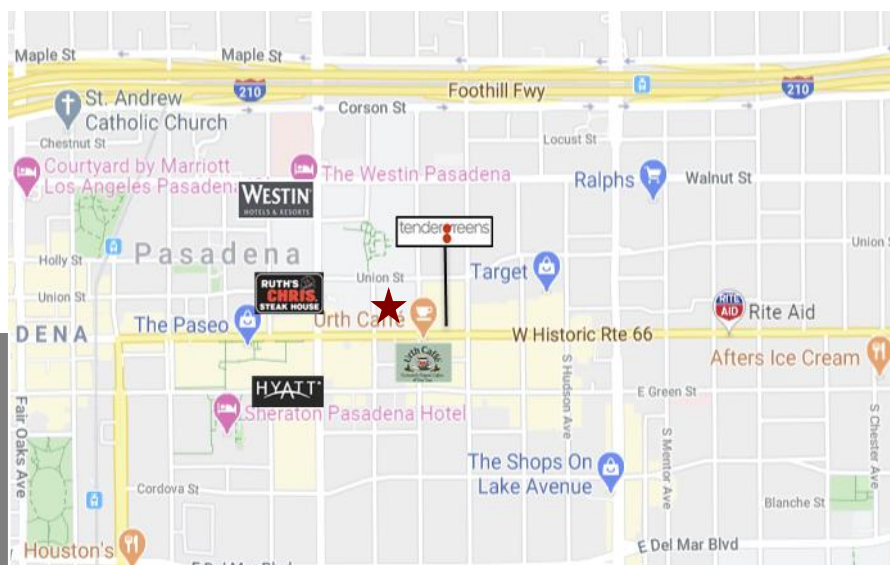
(626) 483-6358

Julie Alle

jalle@redstonecre.com

Lic. # No. 01889085

(626) 864-3927



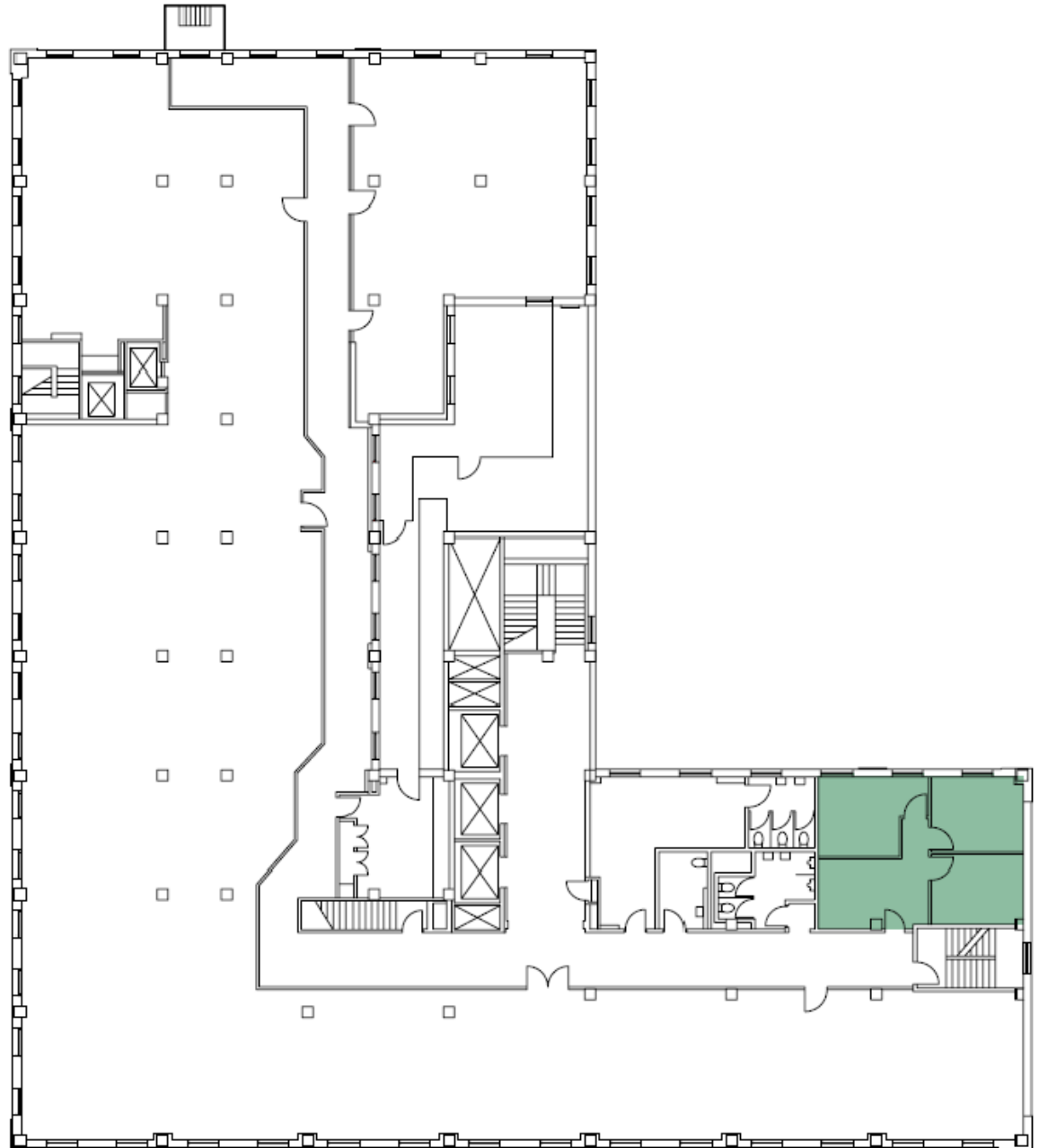
All information contained herein is from sources deemed reliable but has not been verified and is submitted without any warranty or representation, expressed or implied, as to its accuracy, and Redstone Commercial Real Estate, License #01525534, assumes no liability for errors or omissions of any kind, change of price, rental or other conditions, including, without limitation, prior sale, lease or financing or withdrawal without notice. This presentation is for information only and under no circumstances whatsoever is to be deemed a contract, note, memorandum or any other form of binding commitment.

595 E. COLORADO BOULEVARD

PASADENA, CA 91101

SUITE: 211

RENTABLE: 737



FOR FURTHER
INFORMATION PLEASE
CONTACT

JULIE ALLE
Lic. 01889085
T 626.864.3927
JAlle@RedstoneCRE.com

DAN ALLE
Lic. 01017941
T 626.483.6358
DAlle@RedstoneCRE.com



Redstone Commercial Real Estate | 301 N. Lake Ave, Suite 410 | Pasadena, CA 91101 | www.redstonecre.com

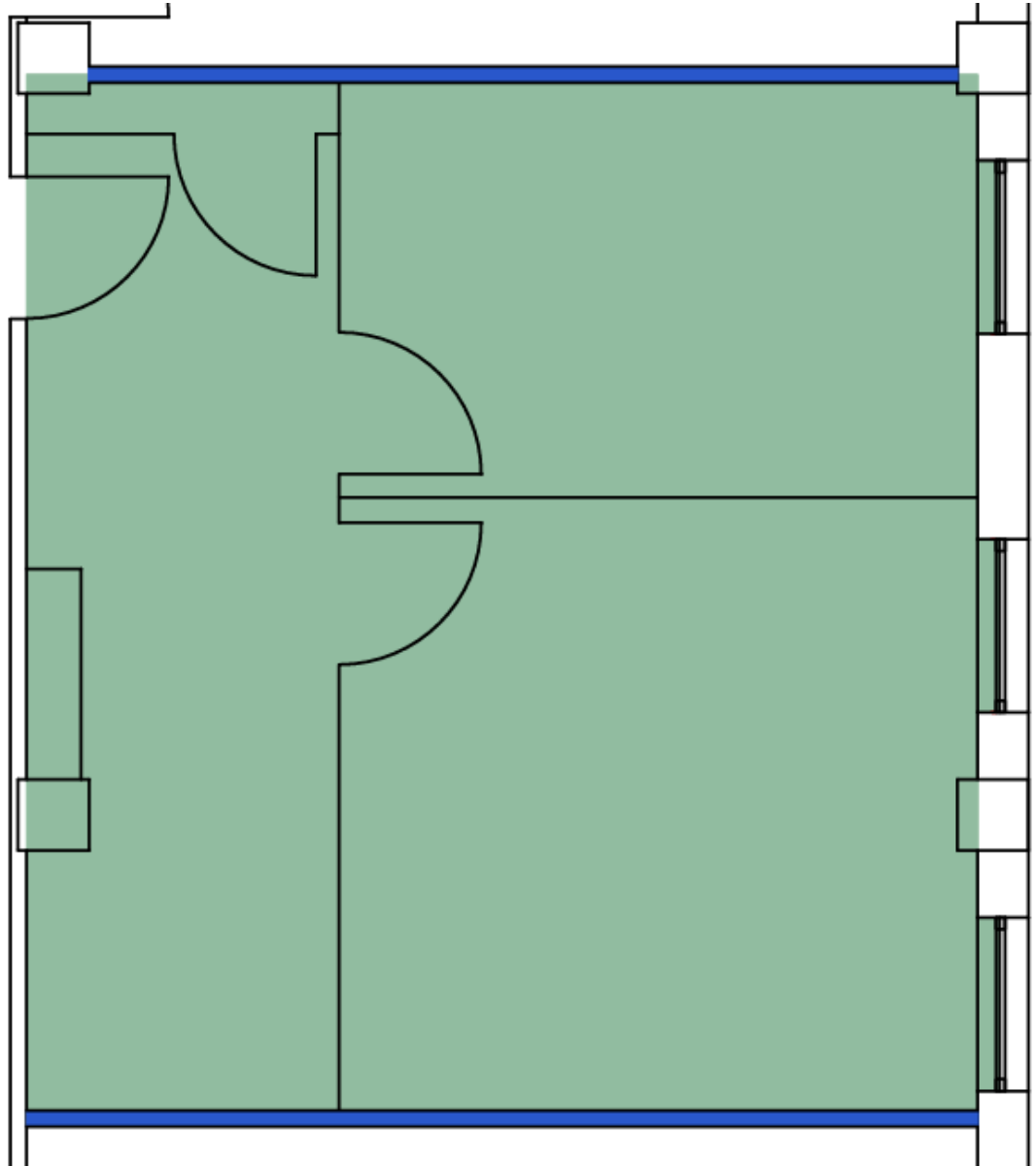
All information contained herein is from sources deemed reliable but has not been verified and is submitted without any warranty or representation, expressed or implied, as to its accuracy, and Redstone Commercial Real Estate, License #01525534, assumes no liability for errors or omissions of any kind, change of price, rental or other conditions, including, without limitation, prior sale, lease or financing or withdrawal without notice. This presentation is for information only and under no circumstances whatsoever is to be deemed a contract, note, memorandum or any other form of binding commitment.

595 E. COLORADO BOULEVARD

PASADENA, CA 91101

SUITE: 409

RENTABLE:
APPROXIMATELY 592 SF



FOR FURTHER
INFORMATION
PLEASE CONTACT

JULIE ALLE
Lic. 01889085
T 626.864.3927
JAlle@RedstoneCRE.com

DAN ALLE
Lic. 01017941
T 626.483.6358
DAlle@RedstoneCRE.com



Redstone Commercial Real Estate | 301 N. Lake Avenue, Suite 410 | Pasadena, CA 91101 | www.redstonecre.com

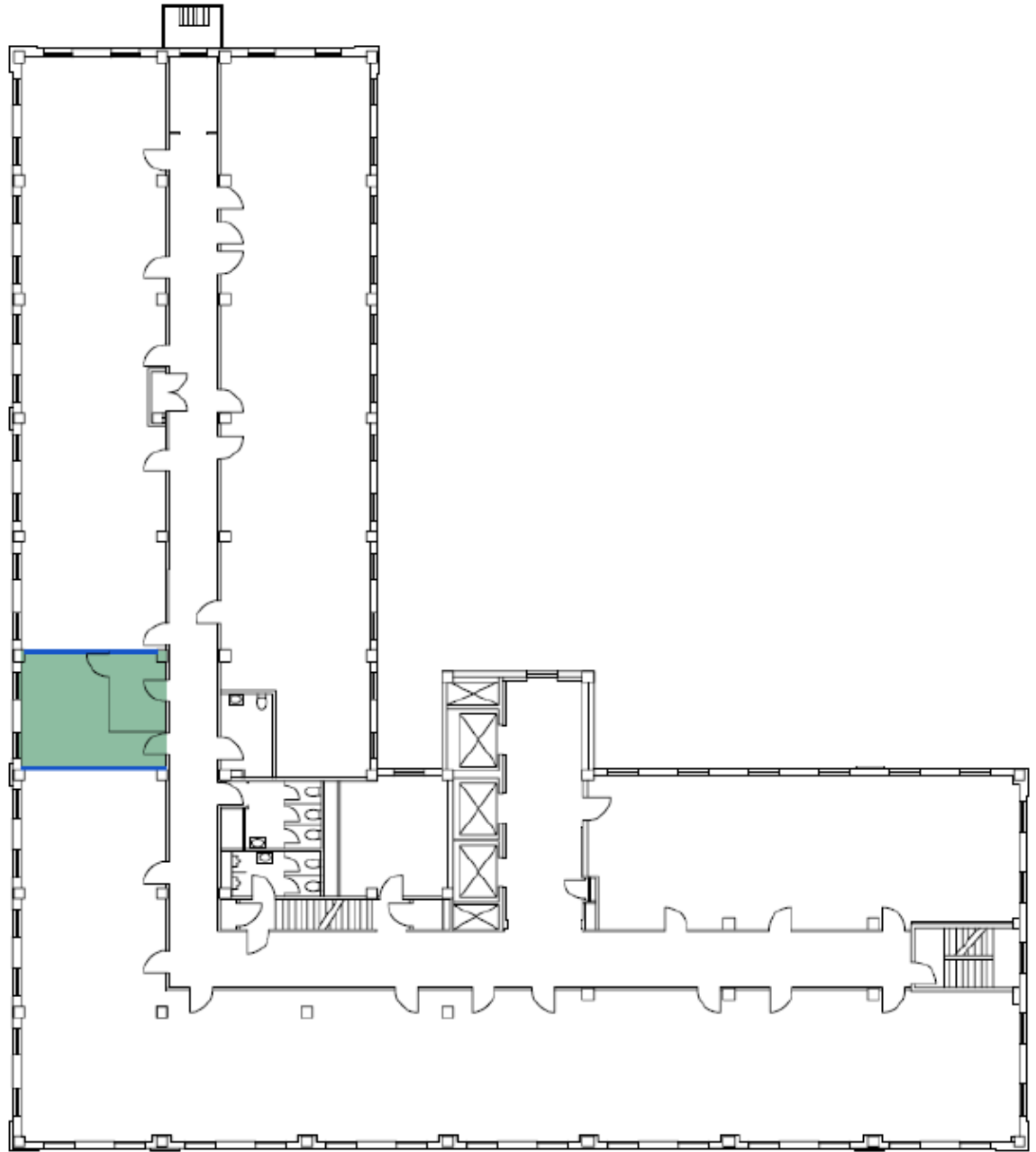
All information contained herein is from sources deemed reliable but has not been verified and is submitted without any warranty or representation, expressed or implied, as to its accuracy, and Redstone Commercial Real Estate, License #01525534, assumes no liability for errors or omissions of any kind, change of price, rental or other conditions, including, without limitation, prior sale, lease or financing or withdrawal without notice. This presentation is for information only and under no circumstances whatsoever is to be deemed a contract, note, memorandum or any other form of binding commitment.

595 E. COLORADO BOULEVARD

PASADENA, CA 91101

SUITE: 412

RENTABLE: 411



FOR FURTHER
INFORMATION
PLEASE CONTACT

JULIE ALLE
Lic. 01889085
T 626.864.3927
JAlle@RedstoneCRE.com

DAN ALLE
Lic. 01017941
T 626.483.6358
DAlle@RedstoneCRE.com



Redstone Commercial Real Estate | 301 N. Lake Avenue, Suite 410 | Pasadena, CA 91101 | www.redstonecre.com

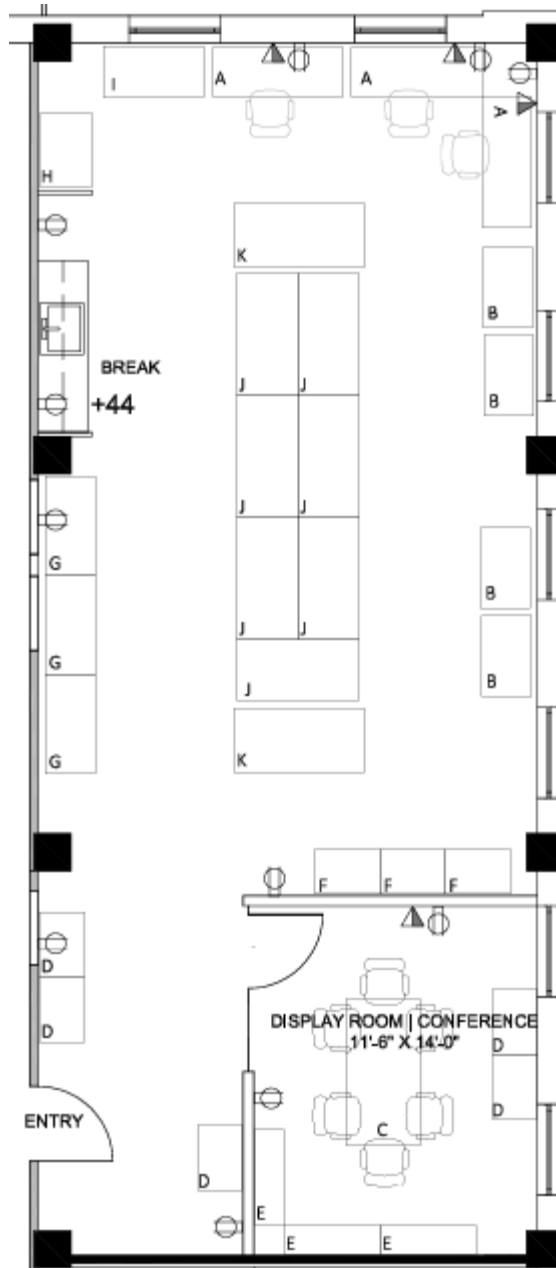
All information contained herein is from sources deemed reliable but has not been verified and is submitted without any warranty or representation, expressed or implied, as to its accuracy, and Redstone Commercial Real Estate, License #01525534, assumes no liability for errors or omissions of any kind, change of price, rental or other conditions, including, without limitation, prior sale, lease or financing or withdrawal without notice. This presentation is for information only and under no circumstances whatsoever is to be deemed a contract, note, memorandum or any other form of binding commitment.

595 E. COLORADO BOULEVARD

PASADENA, CA 91101

SUITE: 501

RENTABLE SF:
1,318



FOR FURTHER
INFORMATION PLEASE
CONTACT

JULIE ALLE
Lic. 01889085
T 626.864.3927
JAlle@RedstoneCRE.com

DAN ALLE
Lic. 01017941
T 626.483.6358
DAlle@RedstoneCRE.com



Redstone Commercial Real Estate | 301 N. Lake Ave, Suite 410 | Pasadena, CA 91101 | www.redstonecre.com

All information contained herein is from sources deemed reliable but has not been verified and is submitted without any warranty or representation, expressed or implied, as to its accuracy, and Redstone Commercial Real Estate, License #01525534, assumes no liability for errors or omissions of any kind, change of price, rental or other conditions, including, without limitation, prior sale, lease or financing or withdrawal without notice. This presentation is for information only and under no circumstances whatsoever is to be deemed a contract, note, memorandum or any other form of binding commitment.

Creating Value for Our Tenants

Through a commitment to environmental stewardship, positive social impact and tenant well-being

OPERATING SUSTAINABLY

We engage with our tenants to optimize building performance through day-to-day management, investment in high-efficiency equipment, innovative solutions and encouraging practices that lower our carbon footprint.

↓ 20%

Reduction in Total Energy Consumption

↓ 26%

Reduction in GHG Emissions Intensity

↓ 22%

Reduction in Water Consumption

↓ 50%

Reduction in Scope 1 and 2 GHG Emissions by 2030

↓ 100%

Reduction in Scope 1 and 2 GHG Emissions (net zero) by 2040

Like-for-like reductions from 2018 to 2023



REDUCING WASTE

- › Building-level and in-suite recycling
- › On-site composting
- › Collection programs for e-waste



SAVING WATER

- › Minimizing water use for outdoor cleaning
- › Choosing water-free cleaning when possible
- › Using reclaimed water for landscaping



TRACKING ENERGY

We use ENERGY STAR Portfolio Manager to track performance



CREATING AN ENVIRONMENT FOR HEALTH AND WELLNESS

Our property management teams ensure our buildings are compatible with good health. In addition, tenants enjoy access to spaces and services powered by ever-advancing technology through our h³experiences[®] program.

Healthy building practices include:

- › Proper ventilation that maximizes outside air
- › Incorporating natural light
- › Use of nontoxic products
- › Monitoring CO₂, PMs and VOCs
- › LEED, WELL and Fitwel Certified Buildings

h³experiences[®] offers:

- › On-site meeting and conference centers
- › Amenity-sharing across properties
- › Fitness and wellness offerings
- › Community engagement activities
- › Flexible office solutions and alternative work areas



Scan QR code to download our annual 2023 ESG Report and learn more about our sustainability practices.

[SWIGCO.COM/SUSTAINABILITY](https://www.swigco.com/sustainability)



h³experiences[®]