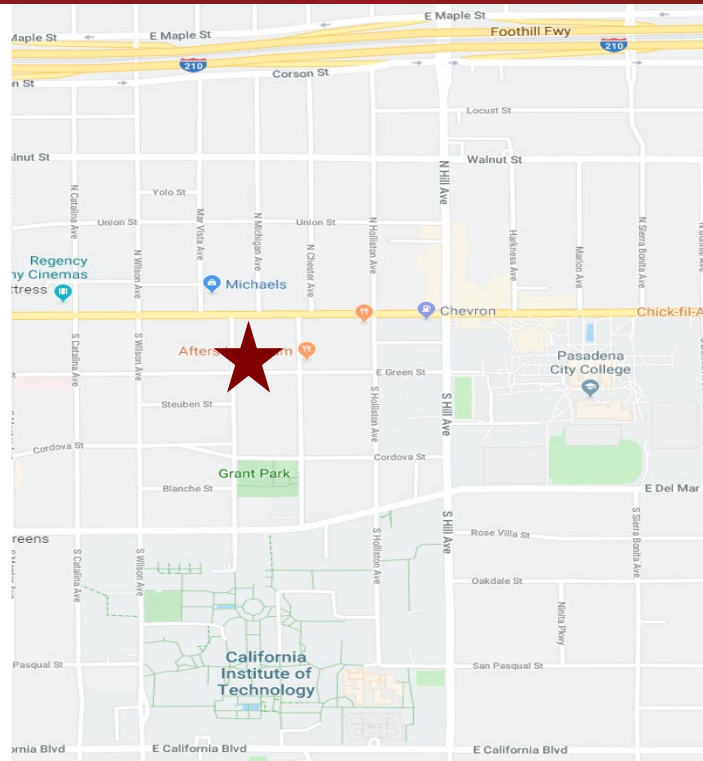


# FREE STANDING BUILDING FOR LEASE



## 1155 E. GREEN STREET, PASADENA, CA

- AVAILABLE SPACE:** Approximately 1,474 sq. ft.
- LEASE RATE:** \$2.60 per sq. ft. per month., MG. Tenant pays its own utilities, gardening, trash, and interior janitorial, alarm service, and liability/plate glass insurance.
- PARKING:** Three (3) free parking spaces included in base rental. Ample street parking available on Green Street.
- AMENITIES:**
- \* Ground floor office space.
  - \* Walking distance to Malbec and Matsuri restaurants.
  - \* Flexible layout with reception area, conference room, open space, and private restroom with shower.
  - \* Excellent signage and visibility.
  - \* Security gate and camera system.



For more Information, Contact:

**Dan Alle**

[dalle@redstonecre.com](mailto:dalle@redstonecre.com)

Lic. # No. 01017941

(626) 483-6358

**Julie Alle**

[jalle@redstonecre.com](mailto:jalle@redstonecre.com)

Lic. # No. 01889085

(626) 864-3927

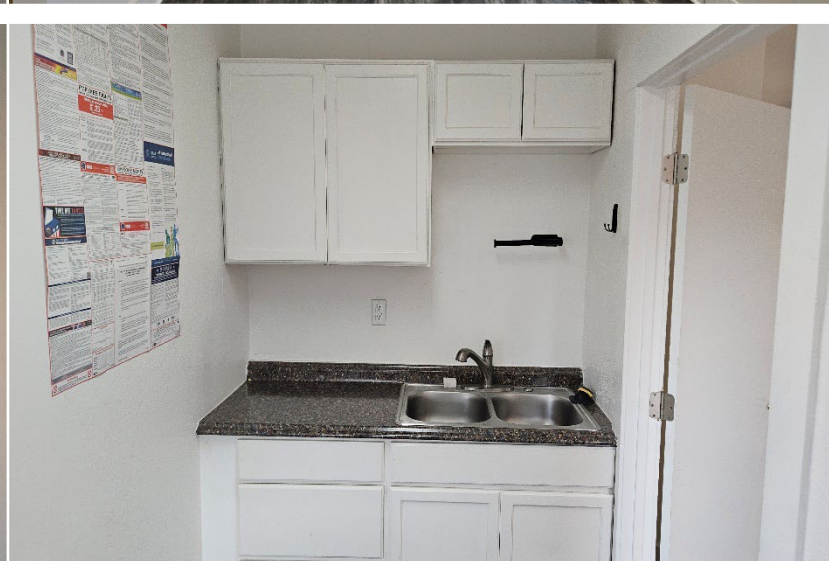
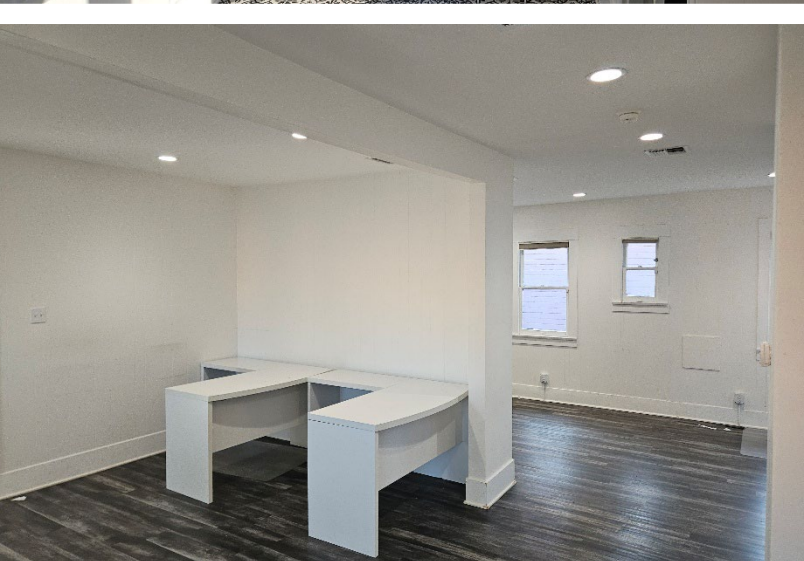
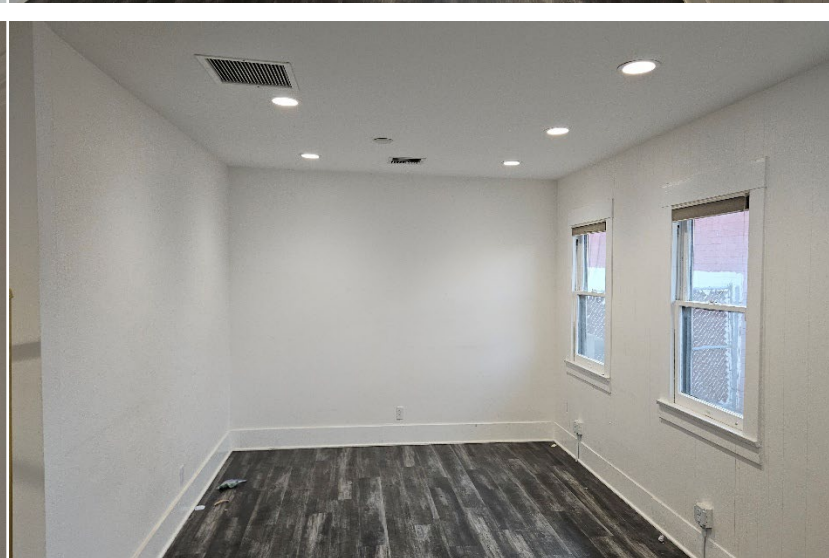
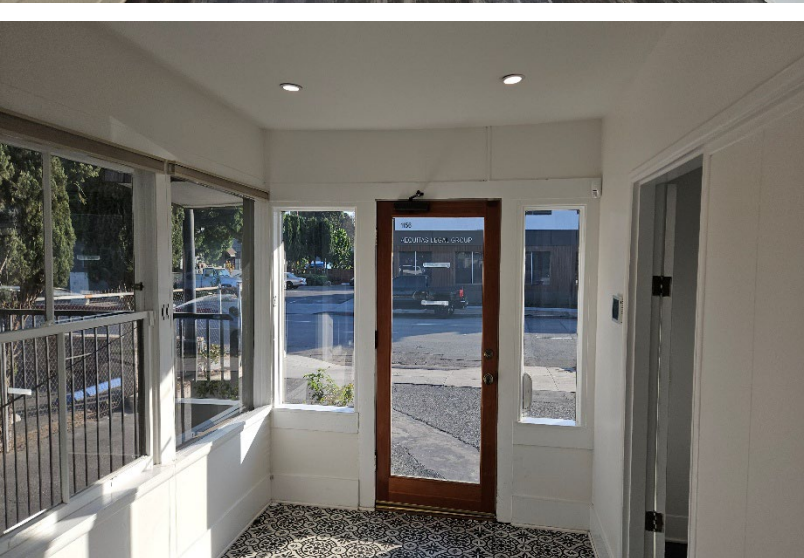
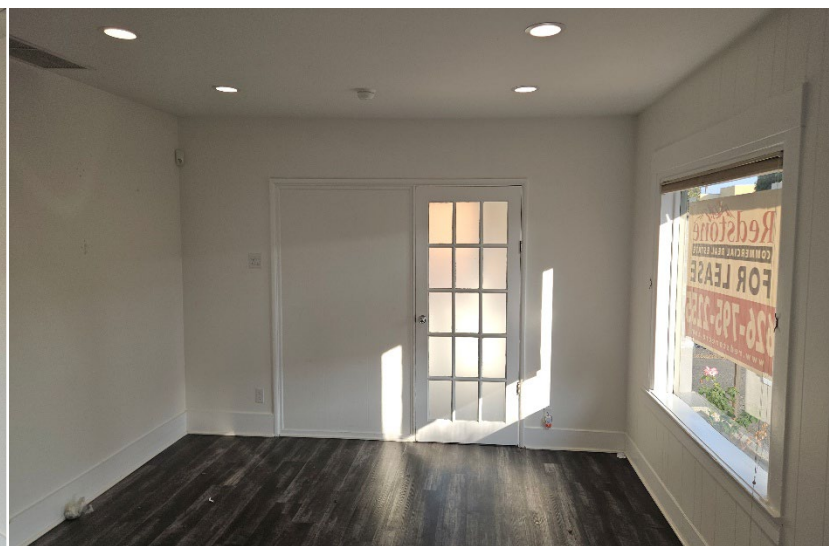
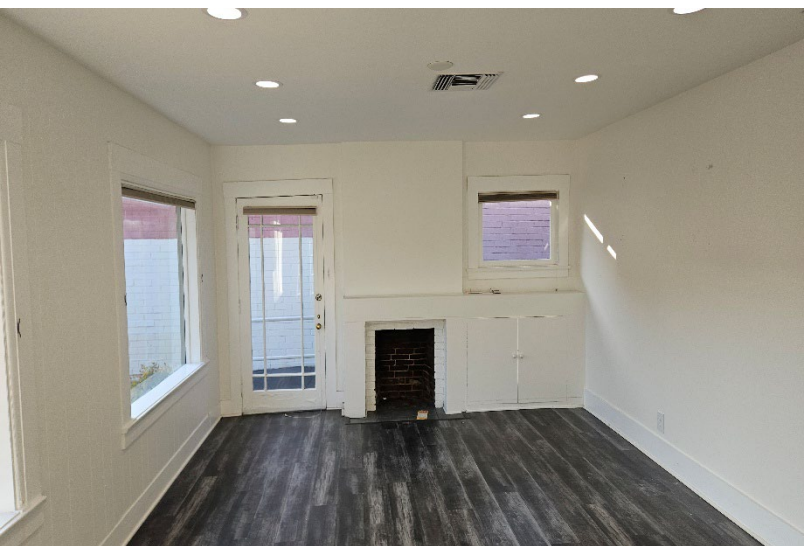
FOR LEASE



All information contained herein is from sources deemed reliable but has not been verified and is submitted without any warranty or representation, expressed or implied, as to its accuracy, and Redstone Commercial Real Estate, License #01525534, assumes no liability for errors or omissions of any kind, change of price, rental or other conditions, including, without limitation, prior sale, lease or financing or withdrawal without notice. This presentation is for information only and under no circumstances whatsoever is to be deemed a contract, note, memorandum or any other form of binding commitment.

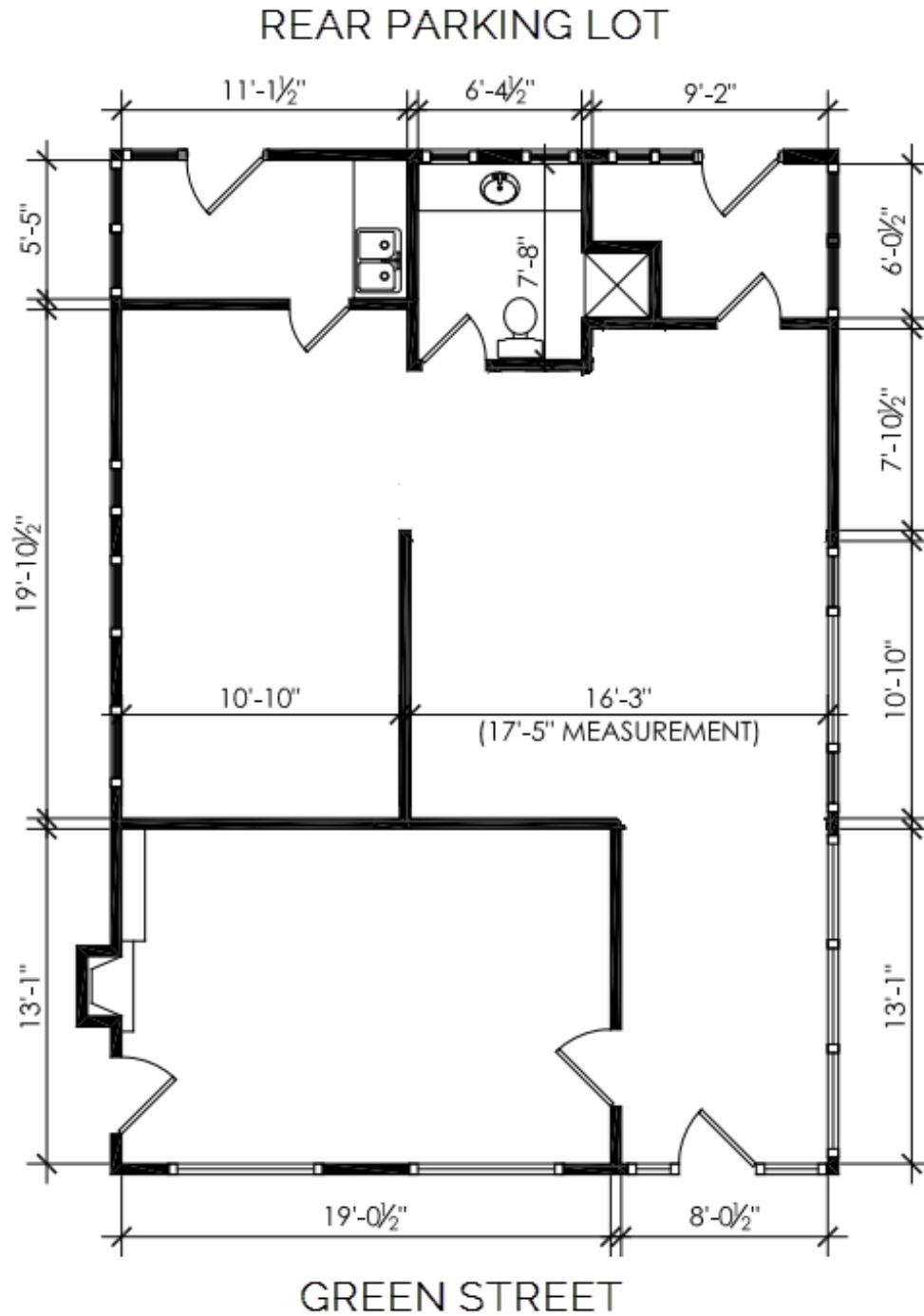


# 1155 E. Green Street



Redstone Commercial Real Estate  
301 No. Lake Avenue, Suite 410, Pasadena CA 91101  
Tel. (626) 795-2255

# 1155 E. Green Street





# 1155 E. GREEN STREET

## Amenity Map

