

FREE STANDING MEDICAL BUILDING OFFICE FOR LEASE



1145 E. GREEN STREET, PASADENA, CA

FOR LEASE

- AVAILABLE SPACE** Approximately 2,137 sq. ft. (Including 382 sq. ft. basement)
- LEASE RATE** \$3.00 per sq. ft., Modified Gross
- Tenant pays for its own utilities, interior janitorial, and liability insurance.
- AVAILABLE** January 1, 2024.
- PARKING** Approximately twelve (12) surface parking spaces free of charge.
- AMENITIES**
- * Free-standing building.
 - * Walking distance to Malbec and Maturi restaurants.
 - * Functional basement and attic space.
 - * Excellent signage and visibility.
 - * Good light and layout.



For more Information, Contact:

Dan Alle

dalle@redstonecre.com

Lic. # No. 01017941

(626) 483-6358

Julie Alle

jalle@redstonecre.com

Lic. # No. 01889085

(626) 864-3927

**DO NOT DISTURB TENANT.
PLEASE MAKE APPOINTMENT WITH BROKER.**



All information contained herein is from sources deemed reliable but has not been verified and is submitted without any warranty or representation, expressed or implied, as to its accuracy, and Redstone Commercial Real Estate, License #01017941, assumes no liability for errors or omissions of any kind, change of price, rental or other conditions, including, without limitation, prior sale, lease or financing or withdrawal without notice. This presentation is for information only and under no circumstances whatsoever is to be deemed a contract, note, memorandum or any other form of binding commitment.

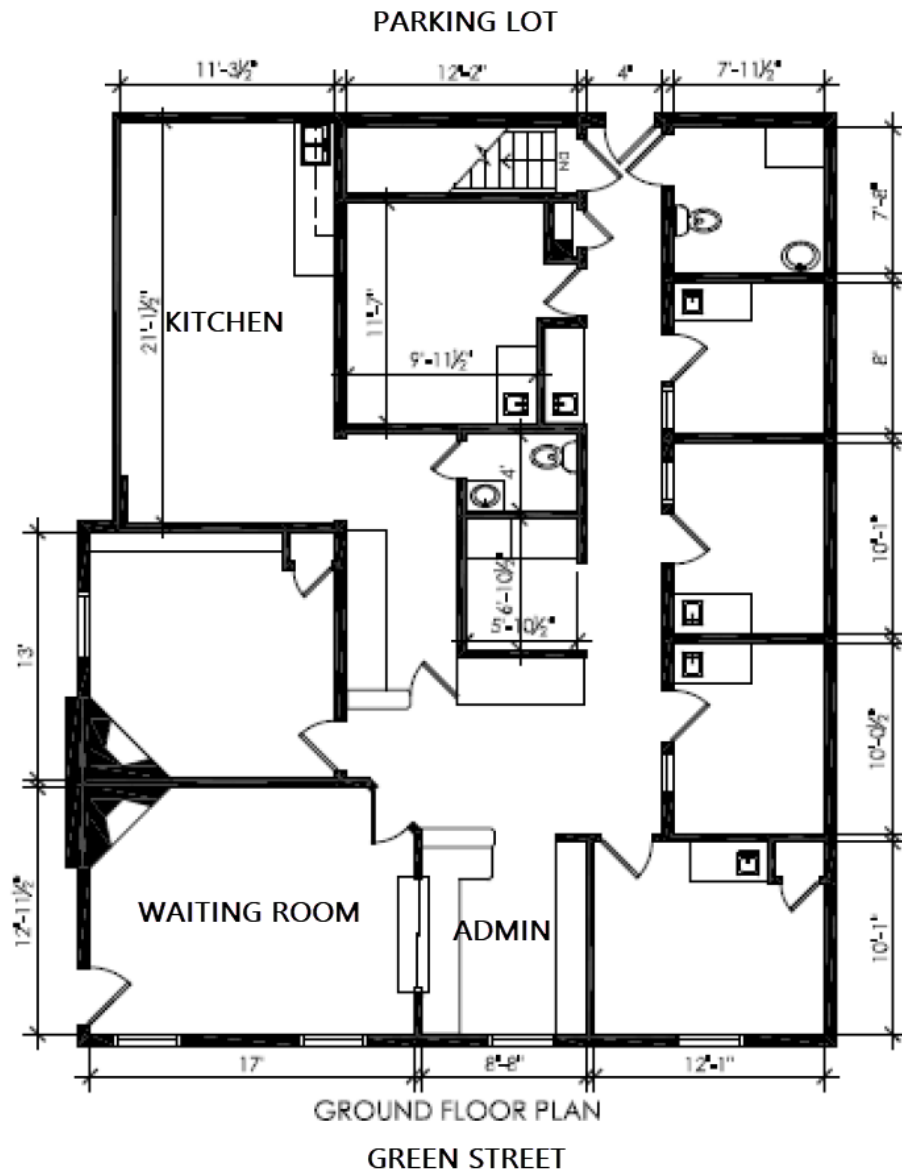
1145 E. Green Street

INTERIOR PICTURES



FLOOR PLAN

GROUND FLOOR



1/8" = 1'-0"

GROUND FLOOR PLAN

GREEN STREET



FLOOR PLAN

BASEMENT

