

GARDEN STYLE BUILDING FOR LEASE



1010 EAST UNION STREET, PASADENA, CALIFORNIA

FOR LEASE

AVAILABLE SPACE: Suite 125 - Approx. 2,525 rentable sq. ft.
Reception area, open space, six (6) offices,
storage room, conference room, and kitchen.

AVAILABLE: Immediately.

RENTAL RATE: \$2.50 per sq. ft., Modified Gross.

Tenant pays its prorata share of utilities.
Landlord pays for five (5) day interior
janitorial.

PARKING: Six (6) reserved parking spaces.

Reserved parking spaces in subterranean
garage at \$75.00 per space per month.

FEATURES:

- * Responsive Management on-site.
- * Spectrum serviced building.
- * Security Cameras in common areas.
- * Elevator Served.
- * Short walk to Lake Avenue and Colorado
Boulevard retail and restaurants.



For more Information, Contact:

Dan Alle

dalle@redstonecre.com

Lic. # No. 01017941

(626) 483-6358

Julie Alle

jalle@redstonecre.com

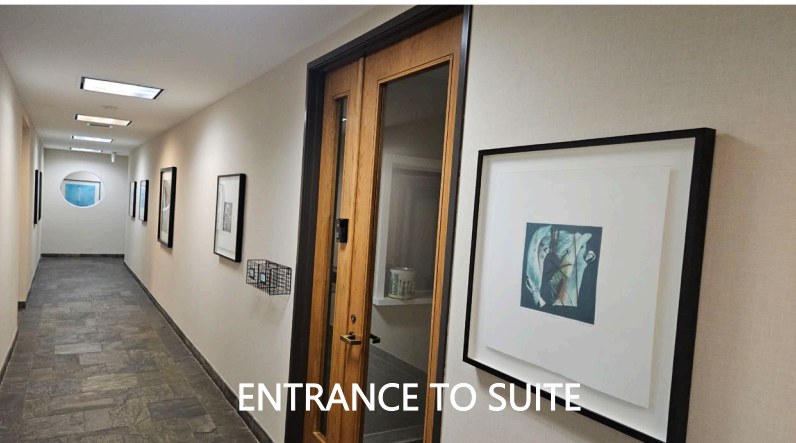
Lic. # No. 01889085

(626) 864-3927



1010 E. UNION STREET

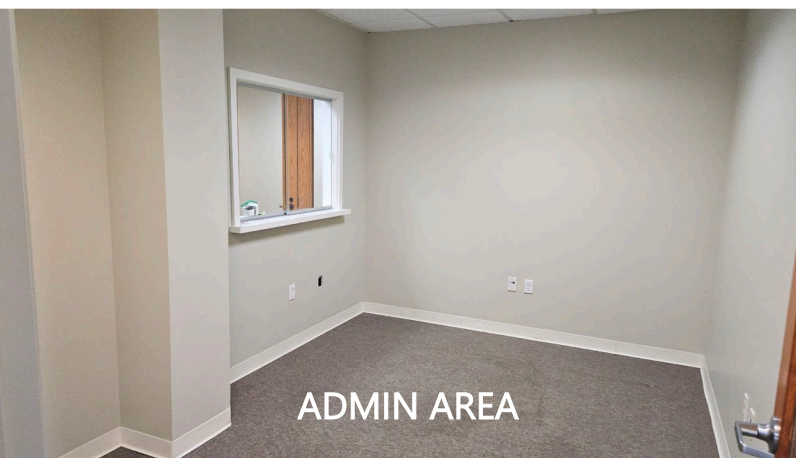
SUITE 125 - INTERIOR PICTURES



ENTRANCE TO SUITE



OPEN SPACE



ADMIN AREA



LARGER OFFICE



CONFERENCE ROOM



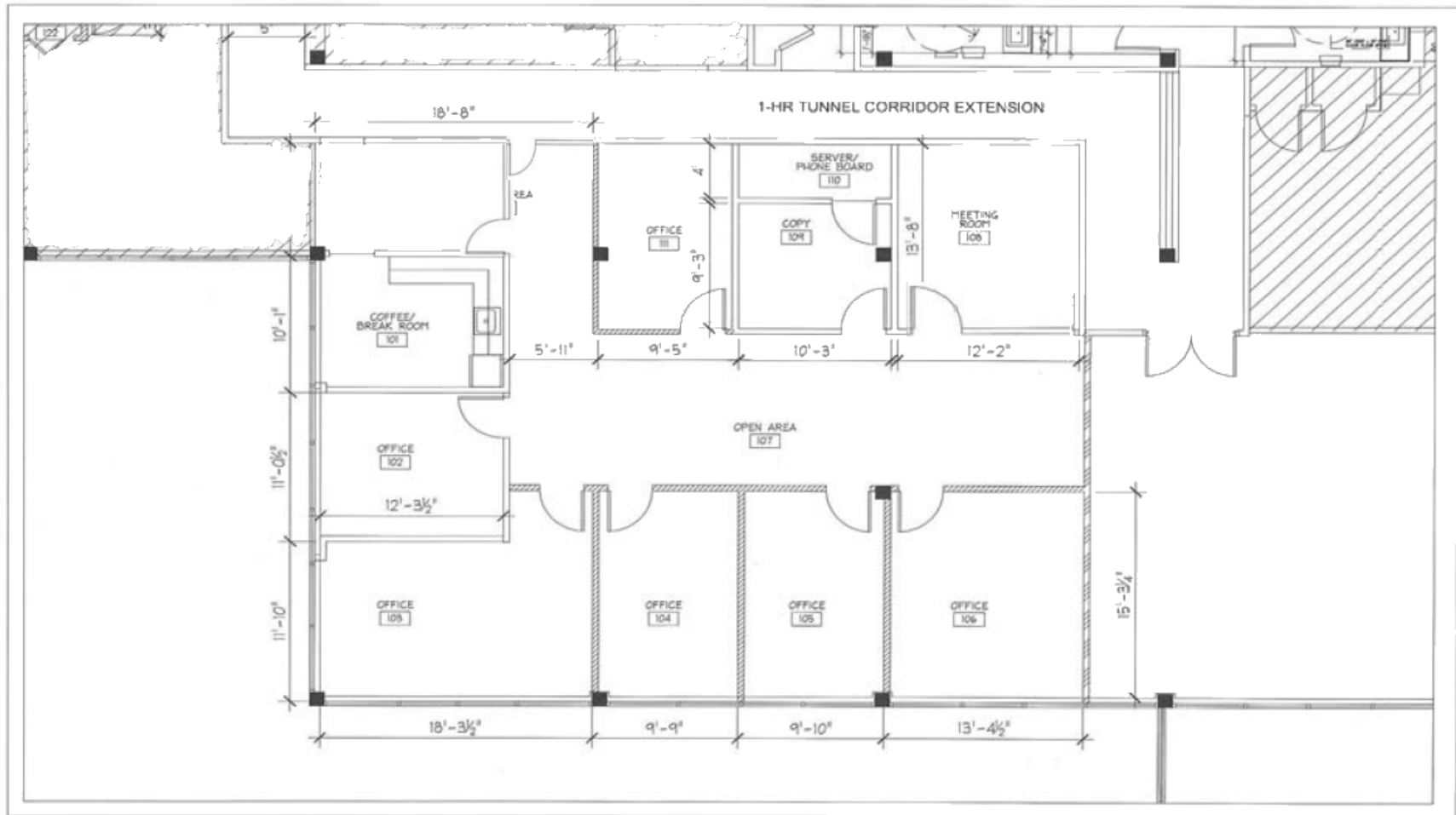
KITCHEN

1010 E. Union Street, Pasadena

SUITE 125

Approximately 2,525 sq. ft.

(Admin area with passthrough window, open area, six (6) offices, conference room, storage area, telecom room, and kitchen.)



AMENITIES

