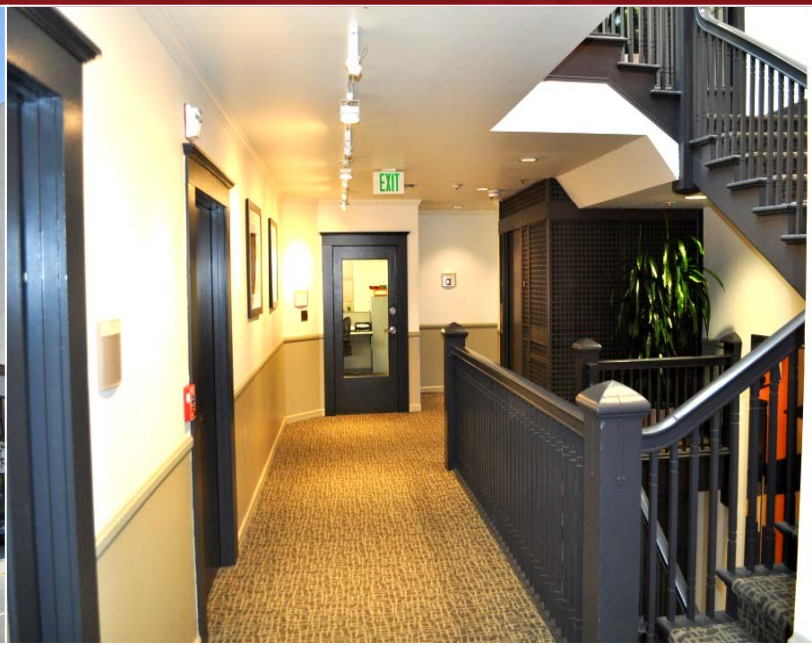


SUBLEASE

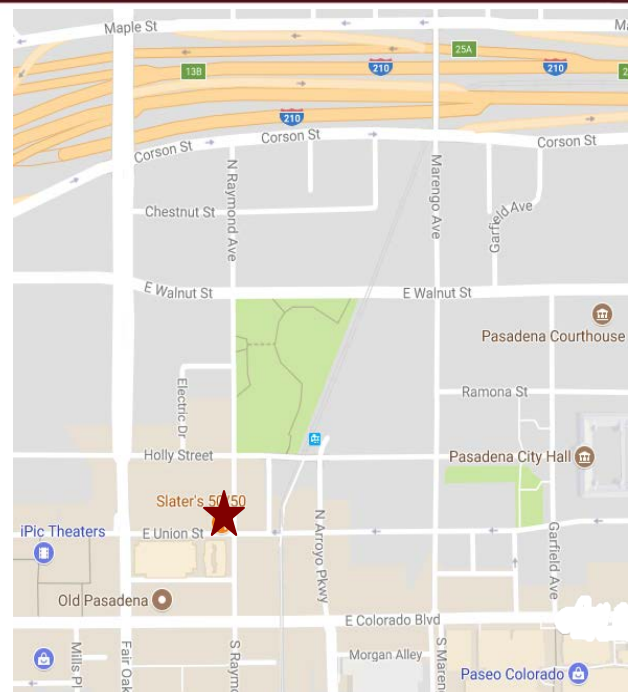


65 N. Raymond Avenue, Suite 235, Pasadena

FOR SUBLEASE

- AVAILABLE:** Suite 235 – 1,114 rentable sq. ft.
- SUBLEASE RENTAL:** \$2.55 FSG with three (3%) percent annual increase.
- TERM:** Expires May 31, 2020.
- AVAILABLE:** August 15, 2017.
- PARKING:** The parking garage at the Marriott Hotel is currently \$85.00/space on an unreserved basis.
- AMENITIES:**
- Skylight atrium and hardwood floors.
 - Recently renovated common areas.
 - Gold Line train and freeway access.
 - Three (3) story Landmark Historic Building.
 - Energy Star certified.

Please do not disturb Tenants. Call the agent for further details or for an appointment.



For Further Information, Contact:

Carole Walker
cwalker@redstonecre.com
License No. 01525534

Dan Alle
dalle@redstonecre.com
License No. 01017941

(626) 795-2255



All information contained herein is from sources deemed reliable but has not been verified and is submitted without any warranty or representation, expressed or implied, as to its accuracy, and Redstone Commercial Real Estate, License #01525534, assumes no liability for errors or omissions of any kind, change of price, rental or other conditions, including, without limitation, prior sale, lease or financing or withdrawal without notice. This presentation is for information only and under no circumstances whatsoever is to be deemed a contract, note, memorandum or any other form of binding commitment.

65 N. Raymond Ave.

Suite 235

